

# Haughton River Catchment

## Catchment Information

### Description

|   |      |
|---|------|
| <b>Area (km<sup>2</sup>)</b>              | 4044 |
| <b>% Gauged</b>                           | 68   |
| <b>Mean Discharge Yr (km<sup>3</sup>)</b> | 0.7  |
| <b>Rainfall (mm)</b>                      | 888  |
| <b>Runoff (mm/m<sup>2</sup>)</b>          | 183  |
| <b>Runoff/Rainfall Ratio</b>              | 21   |

### Land Use

|   |       |
|---|-------|
| <b>Population</b>                               | 10343 |
| <b>Clearing (km<sup>2</sup>)</b>                | 3120  |
| <b>% Cleared</b>                                | 77    |
| <b>Area under Grazing (km<sup>2</sup>)</b>      | 3441  |
| <b>Area under Sugar (km<sup>2</sup>)</b>        | 528   |
| <b>Area under Horticulture (km<sup>2</sup>)</b> | 21    |

### Pesticide Application

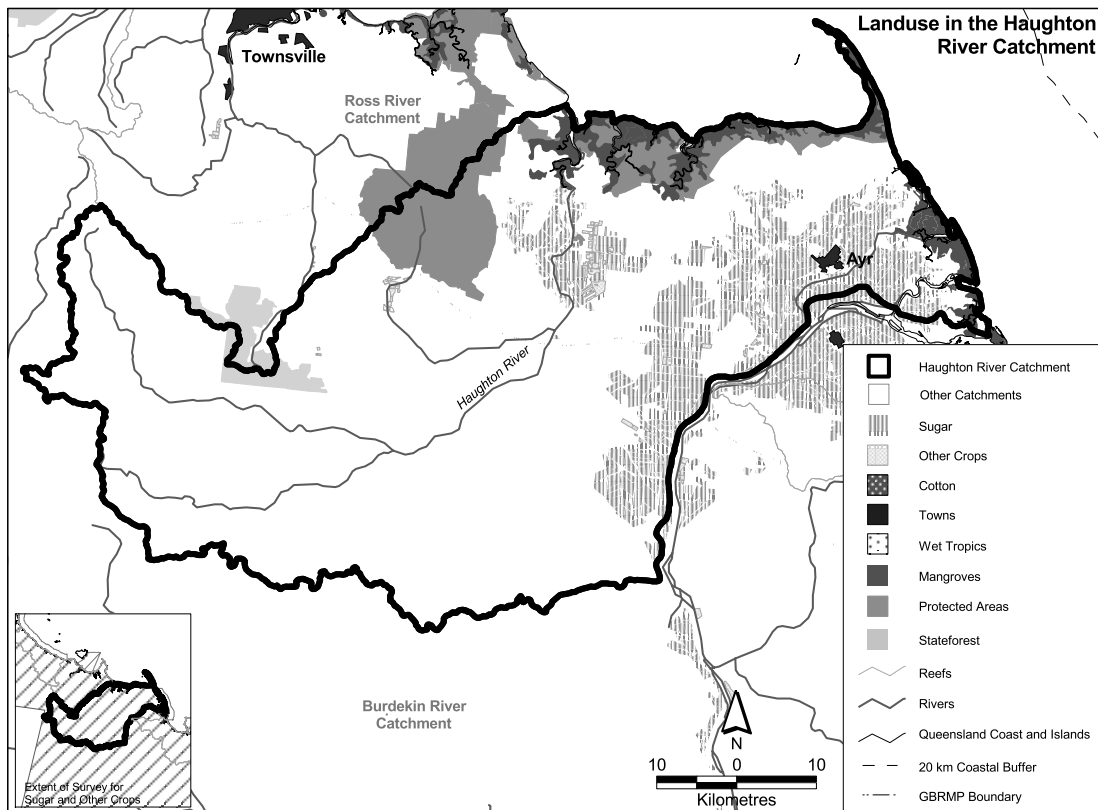
(Kg Active Ingredient/Yr)

|                     |       |
|---------------------|-------|
| <b>Atrazine</b>     | 24299 |
| <b>Diuron</b>       | 4123  |
| <b>2-4D</b>         | 6887  |
| <b>Chlorpyrifos</b> | 285   |
| <b>MEMC</b>         | 247   |

## Catchment Targets

|                        | 1850 T/yr | Current T/yr | Current T/ km <sup>3</sup> | ratio | 2011 % Red'n | 2011 T/yr Target | 2011 T/ km <sup>3</sup> Target |
|------------------------|-----------|--------------|----------------------------|-------|--------------|------------------|--------------------------------|
| <b>Sediment Export</b> | 17000     | 172454       | 232432                     | 10.1  | 33           | 115544           | 155729                         |
| <b>Total N Export</b>  | 180       | 801          | 1082                       | 4.5   | 50           | 401              | 541                            |
| <b>Total P Export</b>  | 9         | 175          | 237                        | 19.4  | 50           | 88               | 119                            |

Data Confidence Index = 1



## Haughton River Catchment

The Haughton River catchment covers an area of 4044 km<sup>2</sup>. Grazing is the dominant land use 3441 km<sup>2</sup>. Other land uses are sugarcane farming 528 km<sup>2</sup> and horticulture 21 km<sup>2</sup>. State forests and timber reserves occupy 30 km<sup>2</sup> and protected areas cover 328 km<sup>2</sup>. Sediment export is classified as medium risk, and total nitrogen and total phosphorus exports are classified as high risk in the Haughton River catchment.

### *Issues in the catchment:*

- Soil erosion is widespread.
- Potential salinity problems occur in some areas as a result from extensive clearing.
- Invasion of exotic weeds along waterways, disturbed clay and/or soil areas.
- Significant contribution of nutrient and pesticides from the flood plain.
- Most cultivation occurs on the river delta.
- Many fauna species are threatened in the catchment.
- Approximately 80% of the catchment has been cleared for grazing.
- Approximately 8% of the catchment is within protected areas.
- Commercial and recreational fishery.
- Close proximity to significant seagrass beds/dugong protection areas.
- Recreational marine use.

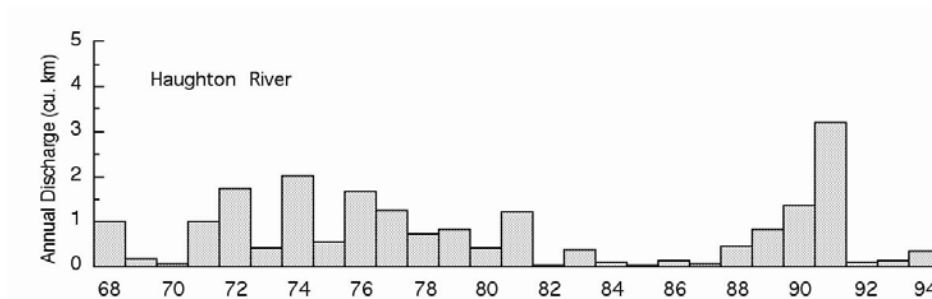


Figure 18. Water discharge patterns in the Haughton River.